

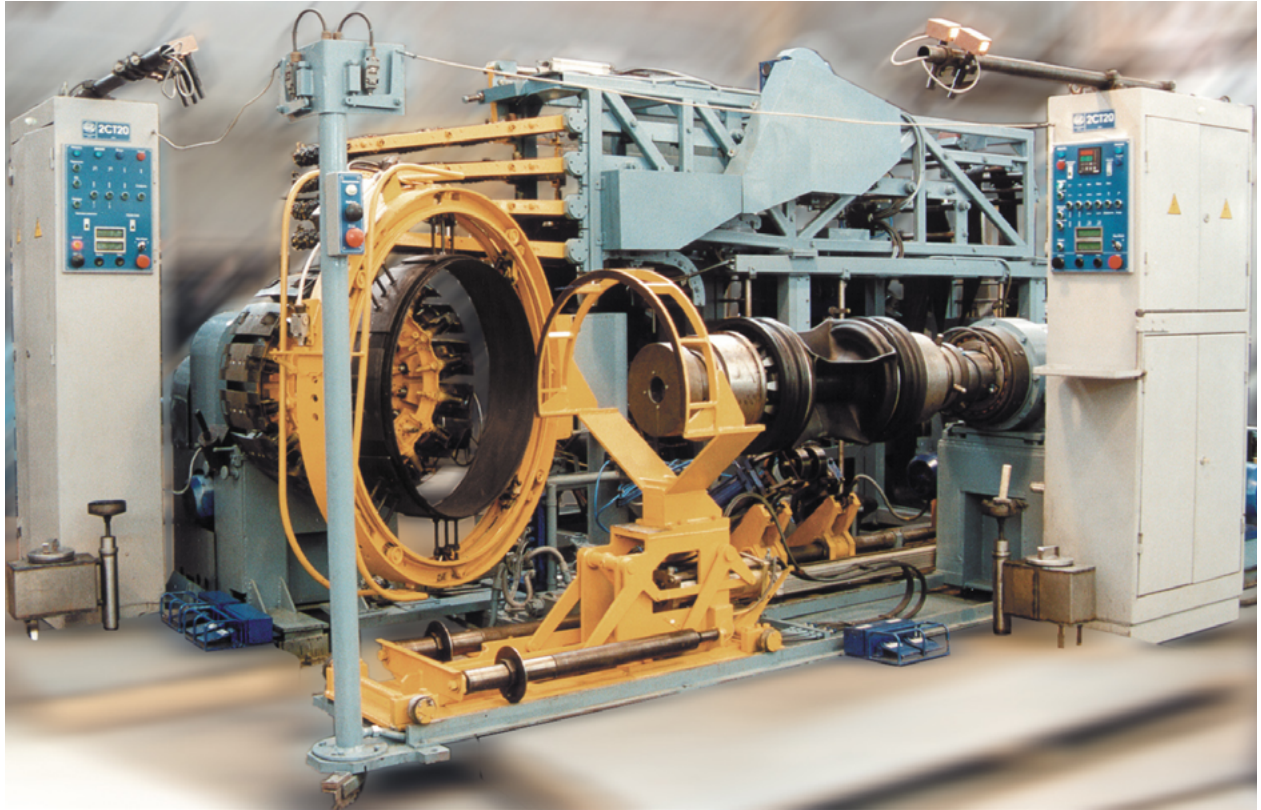


POLICON
Engineering & Manufacturing

***Tire assembly machine
(Model 2 ST 20)***

Tire Assembly machine (Model 2 ST 20)

The tire Assembly machine is designed for the second stage of assembling cargo radial tires with a metal cord breaker and a multi-layer textile frame with a landing diameter of 20 inches.

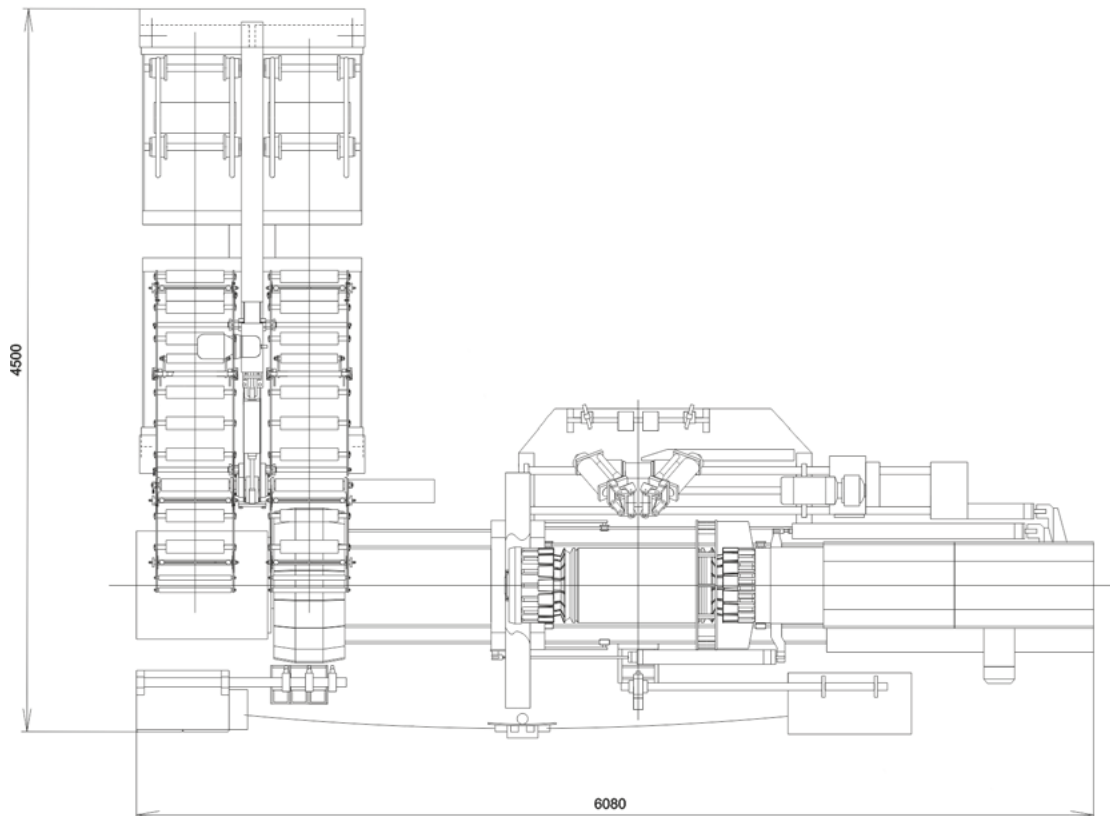
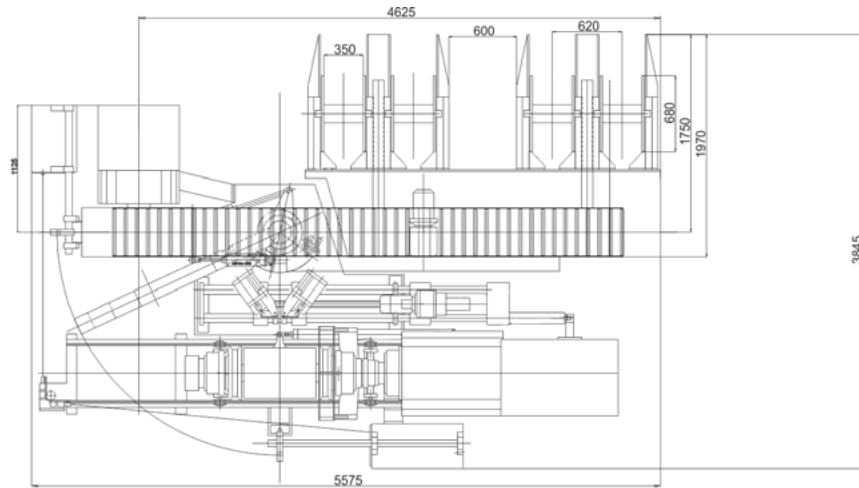


The following operations are performed on the machine:

- assembling a Breker bracelet or a Breker-tread bracelet on a Breker drum with step-by-step decompression of the layers and the release of the Breker layers from the feeder.
- putting the tire frame assembled at the first stage of Assembly using the transfer on the forming drum and fixing the sides of the frame on three sides.
- transfer of the Breker or Breker-tread r bracelet from the Breker drum to the forming one.
- forming the frame.
- rolling a Breker bracelet or Breker-tread bracelet.
- rolling the Breker bracelet, and then the tread when it is applied to the formed frame and the Breker bracelet.
- remove the collected tire from the forming drum using a transfer.

The operations of dressing the frame and fixing it on the forming drum, transferring the Breker or Breker-tread bracelet, forming the frame and rolling it, and removing the finished tire are performed automatically using a programmable controller.

Tire Assembly machine (Model 2 ST 20)



Tire Assembly machine (Model 2 ST 20)

Technical Specification:

Sizes of collected tires: 8. 25R20; 9. 00R20; 10. 00R20; 11. 00R20; 1200R20;
1400R20; 390R20

It is possible to assemble tires with a landing diameter (when installing the
corresponding set of replacement units): 17.5', 20' / 21', 22.5'

Productivity, PCs / h, not less20 / 15-18

The distance between the flanges of the drum, mm250 - 440 / 300 - 780

Diameter of the Breker drum, mm 680 - 760 / 860 - 1 220

Power of electric motors, kW, no more18

Operating modesemiautomatic

Parameters of energy:

the voltage in the network 220 / 380

vacuum, MPa, within0,03 – 0,04

the pressure of the compressed air0,5 – 0,6

Overall dimensions, mm, not more than

A linear version:

length x width x height6 100 x 4,500 x 2,500

The angular version:

length5 600 / 5 950

width3 900 / 4 250

height2 500 / 2 500

Weight kg:

linear version 11 200

angular version 11,200 / 12,500

This product can be manufactured according to the technical specifications of the
customer, taking into account its predetermined parameters and features.

Full cycle engineering services

Food Machinery

Machinery for tires, rubber, plastics manufacturing

Machinery for the chemical and oil and gas industry

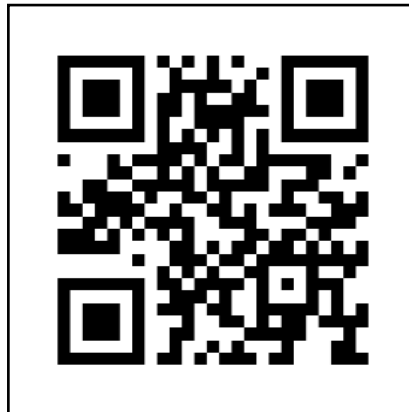
Machinery for the perfumery and cosmetic industry

Modernization and automation of production

Non-standart equipment

Production of spare parts, components, assemblies

Outsourcing services - repair and maintenance of equipment



Policon JSCo

194 Lermontov Str, Omsk 644009, Russia

Tel./Fax: +7 (3812) 36 74 12, 36 74 02, 48 48 30

e-mail: info@policon-rt.ru

www.policon-rt.ru